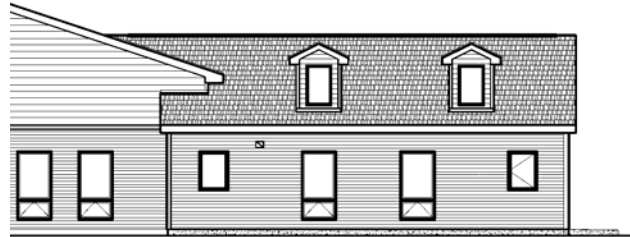
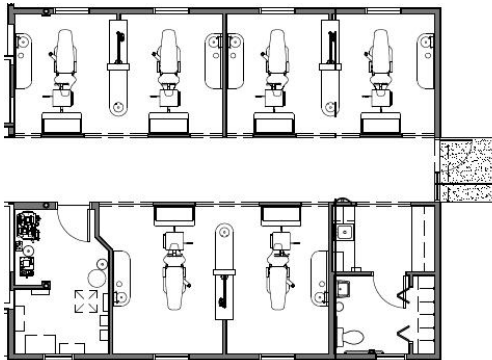


Ground-Breaking Ceremony

Tuesday, August 31, 2010 at 1:00 PM
584 Springville Road
New Holland, PA



As a friend of Welsh Mountain Medical & Dental Center, you understand that access to dental care continues to be one of our community's most pressing needs. That is why the Board of Directors of the Center invites you to join us in celebrating the expansion of our dental program and facilities. Highlights of the project include:

- ✂ A new, 1,300 square foot Dental Wing that expands the number of exam rooms from 7 to 13 rooms
- ✂ 2,000 hours of additional patient care with an expanded dental team, including a new dentist, dental assistant, and receptionist
- ✂ Serving 1,000 new patients in the first year of operation
- ✂ Improved facility efficiency with the installation of a peaked roof and renovation of the HVAC and electrical systems
- ✂ A back-up generator to provide electricity during power outages and facilitate the Center's role in the community-wide Emergency Preparedness and Bioterrorism Plan

The Board of Directors remains committed to their decision to reinforce the current facility, ensuring that the Center will continue to provide the excellent quality of health care that generations of our community have always received. Welsh Mountain Medical & Dental Center has been working diligently to bring additional resources to the area and reduce the number of residents who experience pain and deteriorating health due to a lack of dental access. We are especially grateful to the US Bureau of Primary Health Care, Lancaster County Redevelopment Authority, and a PA Department of Health Community Primary Care Challenge Grant for helping turn this dream into reality.

We hope that you will join us and our shovel-bearing dignitaries as we break ground on a truly, community-wide endeavor. So that we can move forward without delay, this event will be held rain or shine.

Everyone is welcome, and the courtesy of a RSVP to Christine Stumpf at 354-4711, extension 103, is appreciated. If you have any questions regarding the event, Christine or Fred Bogner, extension 136, will be happy to assist you.

Welsh Mountain Medical and Dental Center



New Dental Wing Will Serve 1,000 New Patients

Mission: *To provide quality, family-centered care to all members of the community, especially those who encounter barriers to care.*